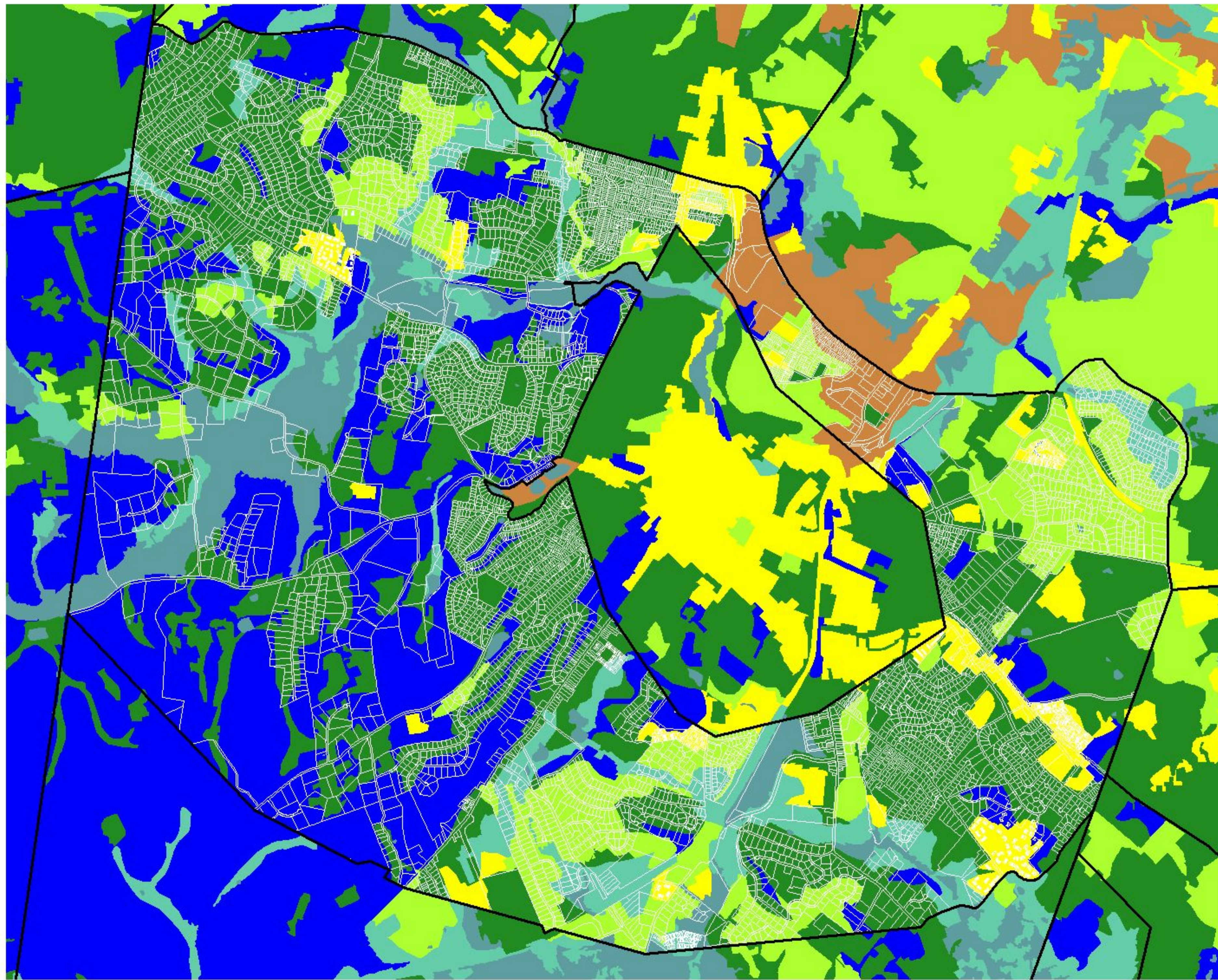


# Groundwater Recharge in Morris Township



**Groundwater Recharge**

- 19 to 23 in/yr
- 15 to 18 in/yr
- 12 to 14 in/yr
- 1 to 11 in/yr
- 0 in/yr
- Hydric Soils
- Wetlands and Open Water
- No Recharge Calculated
- Municipal Boundary
- Parcels



Map Prepared January 17, 2005 by:  
MORRIS LAND CONSERVANCY  
19 Boonton Ave  
Boonton, NJ 07005

"This map is to be used solely for planning purposes, and does not take the place of a survey." Map cannot be used at a parcel scale.

Data Sources: NJGS, Morris County Department of Planning & Development  
"This map was developed using New Jersey Department of Environmental Protection Geographic Information System digital data, but this secondary product has not been verified by the NJDEP and is not state-authorized."

